

Configuration parameter

Item		
Tire type	Front and rear Polyurethane tires	●
Keys	Universal keys	●
	Non-universal keys	○
	Card	○
	Universal keys and password lock	○
Battery capacity(Ah)	202(2t standard configuration)	●
	228(2.5t standard configuration)	○
	280	○
	346	○
Charger	404	○
	No	●
Width across forks(mm)	Built-in charger	○
	550	●
Fork length(mm)	1150	●
	1200-2400	○
Minimum fork height(mm)	85	●
Packaging method	Heli packaging	●
	Neutral packaging	○

Item		
Timing method	Power-on timing	●
	Travel timing	○
Plates	Plates in Chinese	●
	Plates in English(EN)	○
	Plates in French	○
	Plates in German	○
Steering wheel	Domestic steering wheel	●
	Imported steering wheel	○
Load Wheel (Front Wheel)	Dual tries	●
	No	●
Built-in bracket	Barcode scanner holder	○
	A4 paper holder	○
	No	●
Light	Daytime running lights	○
	Front light	○
	Daytime running lights and Front light	○
Load Backrest Option	No load backrest installed	●
	Elevated load backrest, H=1660mm	○

www.helichina.com

HELI

CBD20/25 A2RBLIH

H Series 2-2.5t Stand-on Pallet Truck



ANHUI HELI CO., LTD.

Add / No.668, FangXing Road, Hefei, China
Fax / +86-551-63639966

Tel / +86-551-63639068 (North America); 63634335 (Latin America);
63639258 (Europe); 63639358 (Asia); 63662105 (Africa& Middle East);
63648352 (Eurasia); 63629143 (Oceania)

E-mail / heli@heliforklift.net



LinkedIn



YouTube



Facebook

Design&Print:Fokeli Printing 20260310

* Our products are subject to improvements and changes without notice.



CBD20/25 A2RBLIH

H Series 2-2.5t
Stand-on Pallet Truck



Performance

24V AC platform with outstanding performance and versatile configurations, significantly enhancing work efficiency.



Reliability

Robust and durable, compliant with CE/UKCA requirements



Appearance

Featuring a streamlined design for a more dynamic appearance.

Intelligent Safety

PES three-speed mode to meet the needs of different occasions and working conditions

Standard Mode

Power Mode

Economic Mode

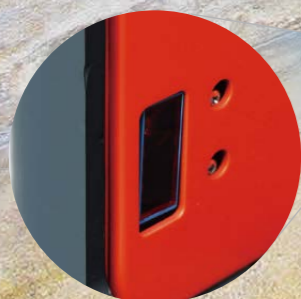
Drive System

Equipped with a ZF gearbox, providing fast travel speed, reliable quality, and high driving efficiency. The drive system features a drive-wheel load boosting mechanism that automatically adjusts the drive-wheel load according to different loads.

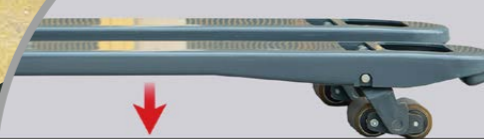
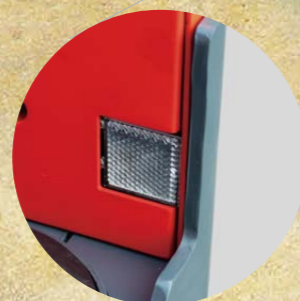


Standard configuration of speed limiter to ensure driving safety.

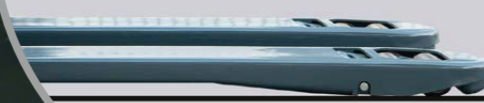
Standard configuration with operator stand-on OPS pedal.



Optional foot-operated electronic safety fence; vehicle brakes automatically if the operator's feet leave the designated area.

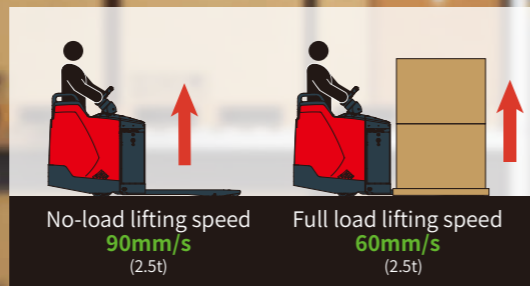
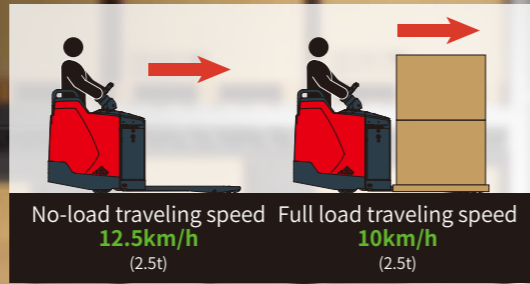


End-of-stroke fork cushioning prevents hard impacts, ensuring safe and comfortable operation.

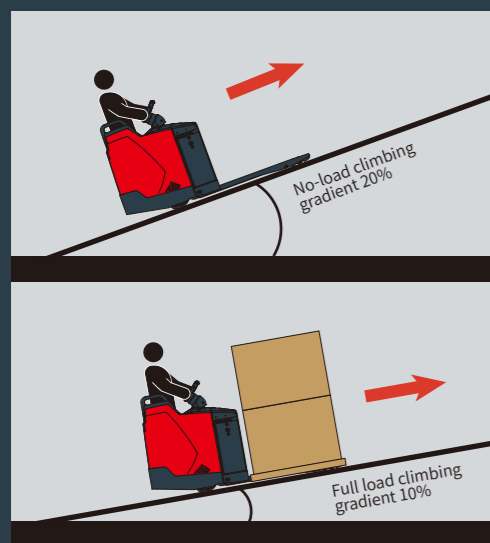


Robust frame structure with optional extended forks up to 2400 mm; full vehicle load capacity of 2500 kg is maintained.

Robust Performance



Ergonomic Design



Controller Assembly

ZAPI drive + EPS AC steering + lifting three-in-one controller, max drive current 350A, super power; dual-core controller, in line with the latest EU safety standards

Controller

Equipped with ZAPI dual CPU controller in line with the latest EU standards, the control accuracy is higher

Motor

The high-performance 24V three-phase AC motor delivers exceptional power for traction and steering, ensuring robust and efficient operation in demanding conditions.

Three Electricity

Battery

Equipped with a high-capacity lithium battery, it ensures long-range performance on a single charge, while featuring a standard electric heating system and an optional cold storage working mode for versatile operation in diverse environments.

Standard electric power steering for effortless operation.

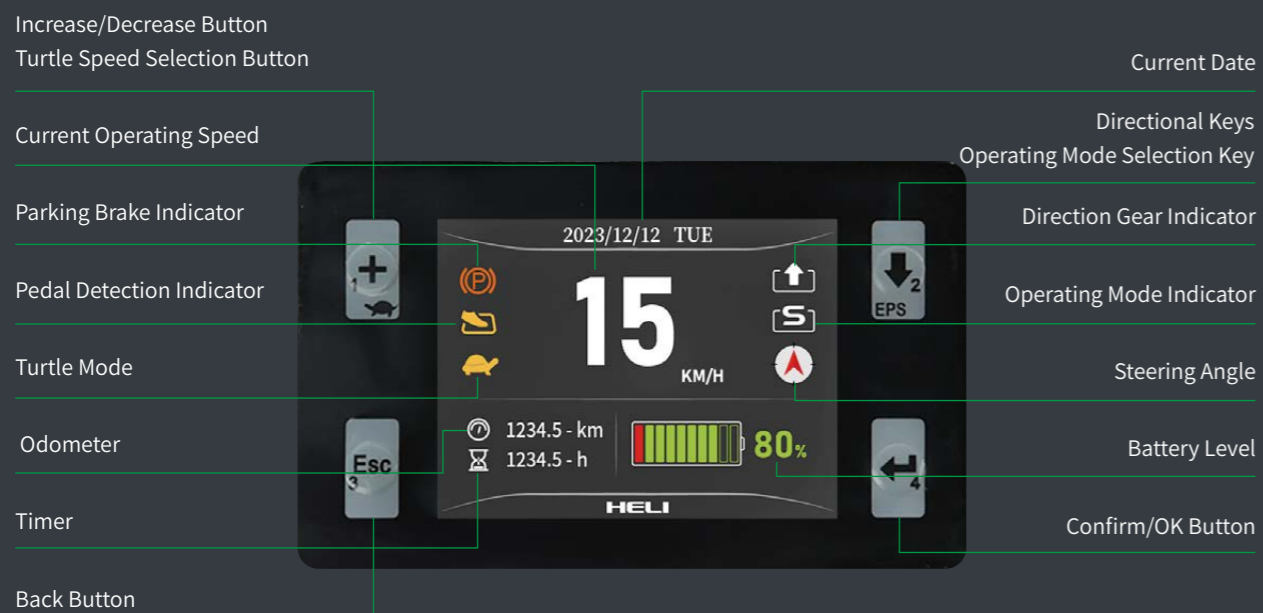
Paired with a speed-sensitive damping steering system, providing superior handling and safer operation at high speeds.

Spacious operator stand-on area

Multi-function Steering Wheel



Reliable Instrument Panel



Battery



Standard side-extractable battery for quick replacement, improving operational efficiency.



The charging port is located on the side, eliminating the need to disconnect the entire device, making charging convenient.

24V charger, with optional built-in 35A or 50A chargers for flexible charging anytime, anywhere, and an external 100A charger for high-efficiency charging.

The battery comes standard with electric heating, easily tackling cold environments.

Optional batteries of various capacities to support extended operating time.

Easy Maintenance

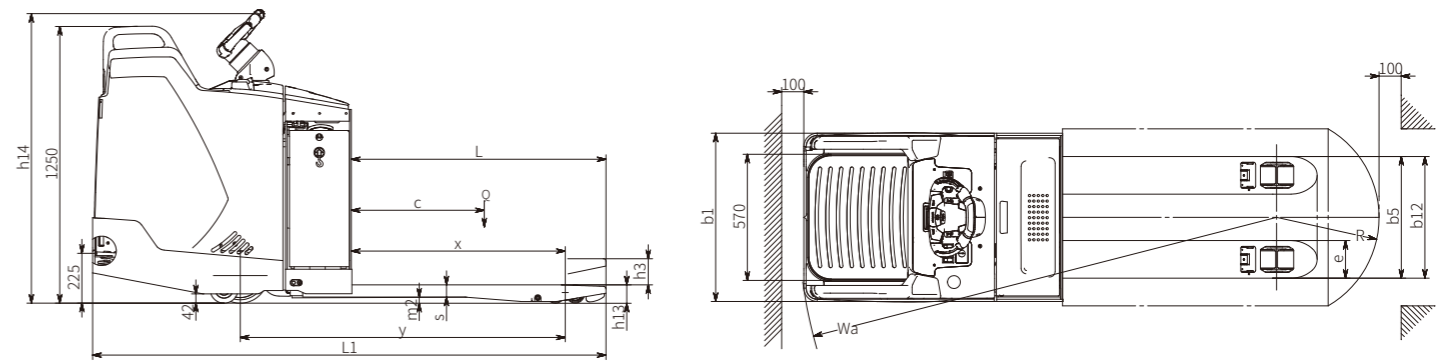
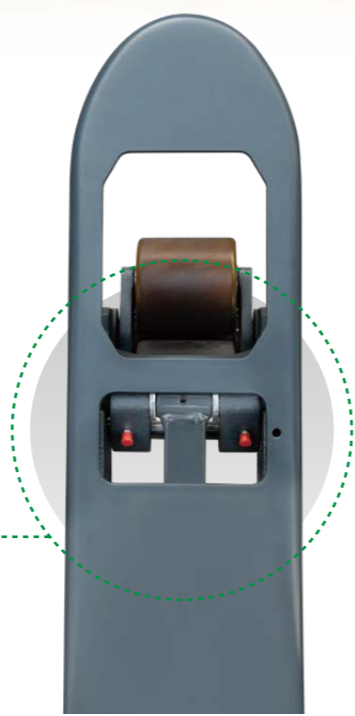


Adjust mechanism of lifting travel switch

The adjustment mechanism of the lifting travel switch facilitates the adjustment of the lifting height, and the side roller adjustment mechanism of the combined roller facilitates the adjustment of the clearance of the side roller

Lubricated bushings and nozzle

All rotating shafts are equipped with lubricated shaft sleeves and grease nipples for easy maintenance and long service life



Manufacturer and Technical DATA

Characteristics					
1.01	Model			CBD20	CBD25
1.02	Configuration No.			A2RBLIH	A2RBLIH
1.03	Operating mode			Stand-on	Stand-on
1.04	Rated capacity	Q	kg	2000	2500
1.05	Load center distance	c	mm	600	600
1.06	Fork Maximum Lifting Height	h3	mm	122	122
1.07	Front overhang	x	mm	913/967	913/967
1.08	Wheelbase	y	mm	1415/1469	1415/1469
Wheels					
2.01	Tyre type			Polyurethane	Polyurethane
2.02	Tyre size, front	Ø*w		Ø250x75	Ø250x75
2.03	Tyre size, rear	Ø*w		Ø82x85	Ø82x85
2.04	Tyre size, assistant	Ø*w		Ø125x55	Ø125x55
2.05	Number of Wheels (Front/Rear, X=Drive Wheels)			1X+2/4	1X+2/4
2.06	Tread width, rear	b11	mm	390	390
Dimensions					
3.01	Overall Length	L1	mm	2320	2320
3.02	Overall Width	b1	mm	760	760
3.03	Fork dimensions	s/e/l	mm	1150x170x55	1150x170x55
3.04	Width across forks	b5	mm	550	550
3.05	Minimum fork height	h13	mm	85	85
3.06	Ground Clearance centre of wheelbase	m2		27	27
3.07	Minimum/Maximum height of tiller handle	h14	mm	1334/1416	1334/1416
3.08	Aisle width (Pallet 1000x1200, 1200 along fork)	Ast	mm	2912	2912
3.09	Aisle width (Pallet 800x1200, 1200 along fork)	Act	mm	2283	2283
3.10	Turning radius	Wa	mm	2160	2160
Performance					
4.01	Travel speed (laden/unladen)		km/h	10/12.5	10/12.5
4.02	Lifting speed (laden/unladen)		mm/s	60/90	60/90
4.03	Lowering speed laden/unladen)		mm/s	90/80	90/80
4.04	Gradeability (laden/unladen)		%	10/20	10/20
4.05	Braking type			Electromagnetic brake	Electromagnetic brake
4.06	Drive motor		KW	2.8	2.8
4.07	Lifting motor		KW	3	3
4.08	Electric control			ZAPI	ZAPI
4.09	Vehicle weight (including battery)		kg	890	890
4.10	Axle load (laden, front/rear)		kg	1237/1653	1362/2028
4.11	Axle load (unladen, front/rear)		kg	737/152	737/152
4.12	Battery voltage/capacity		V/Ah	24/202	24/228
4.13	Battery weight		kg	170	170
4.14	Drive control type			AC	AC
4.15	Noise level at driver's workstation		dB(A)	≤70	≤70
4.16	Steering type			Electric steering	Electric steering