

HELI

www.heliforklift.net

HELI

45 t

G2 series
Lithium Battery
Reach Stacker



ANHUI HELI CO., LTD.

Add / No.668, FangXing Road, Hefei, China
Fax / +86-551-63639966
Tel / +86-551-63639068(America); 63639258(Europe);
63639358(Asia); 63662105(Africa & Middle East)



LinkedIn



YouTube



Facebook

Design&Print:Fokeli Printing / 20241216

* Our products are subject to improvements and changes without notice.

*With more than 60 years
of Heli technical precipitation*

HELI collaborates with the
strengths of others and creates
high-quality products.



Heli 45t electric reach stacker can be widely used in enterprises, stations, ports, docks, cabins etc., for oversized cargo handling and some types of empty container handling and stacking.

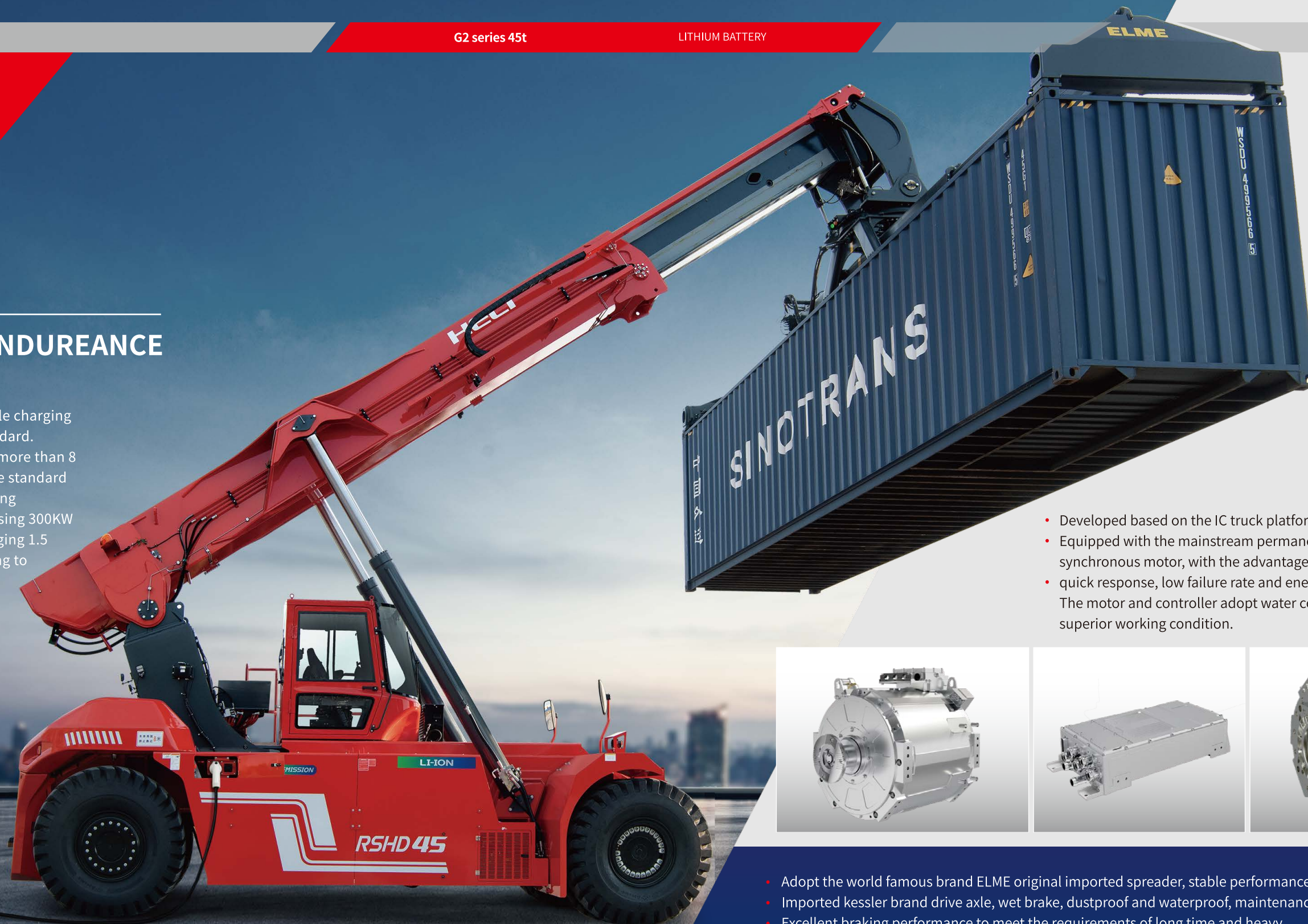
A

CHARACTERISTIC

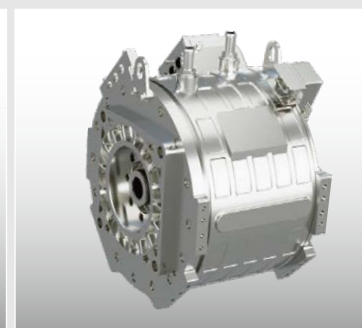
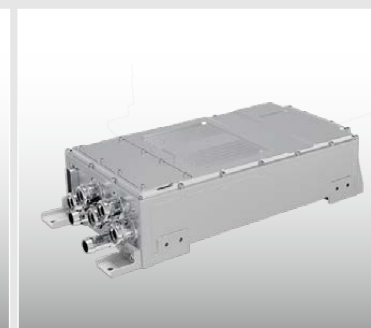
1

LONG BATTERY ENDUREANCE

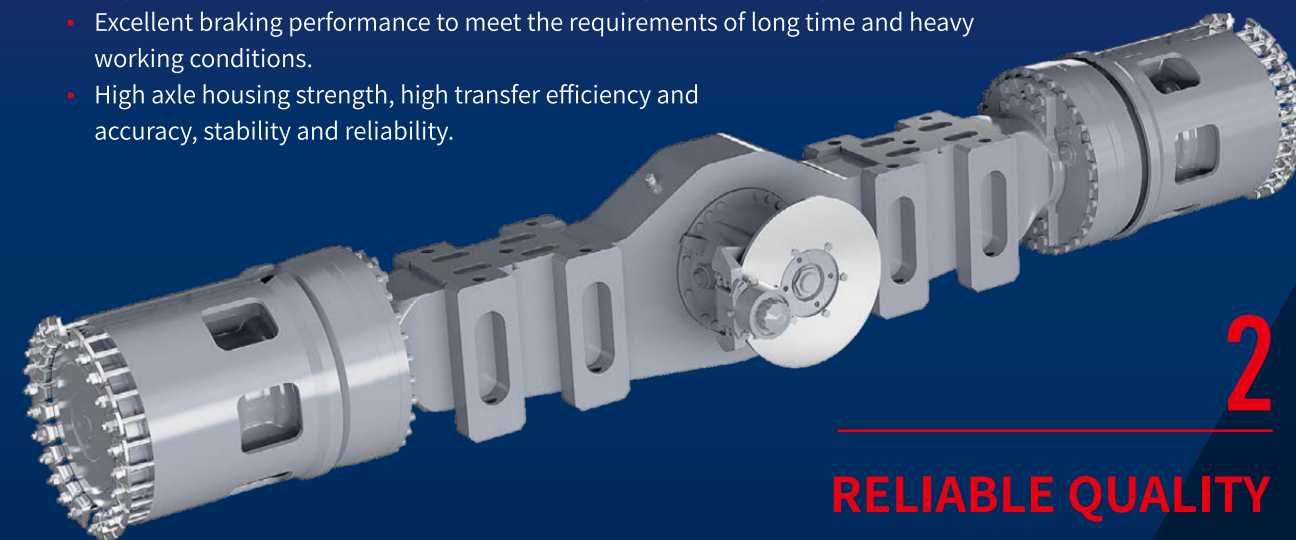
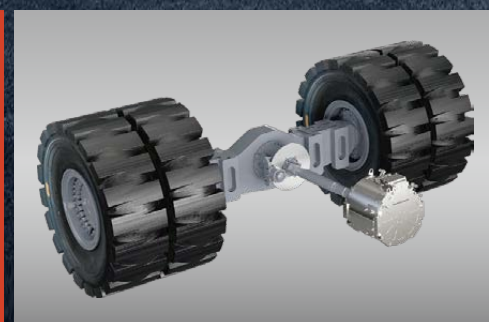
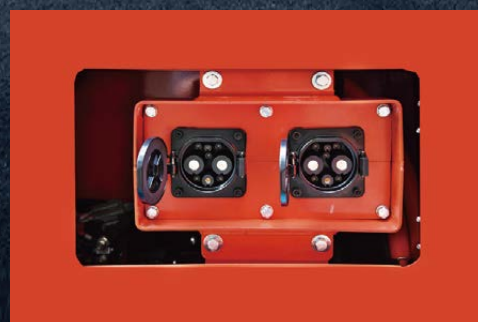
- Compatible with new energy vehicle charging pile and dual charging port as standard.
- The standard battery can working more than 8 hours under normal conditions, the standard battery can meet the normal working conditions of more than 8 hours, using 300KW charging pile and double gun charging 1.5 hours can be full charged. According to customer demands, up to 521kWh lithium-ion battery optional.



- Developed based on the IC truck platform, mature and reliable.
- Equipped with the mainstream permanent magnet synchronous motor, with the advantages of high efficiency, quick response, low failure rate and energy saving etc.
- The motor and controller adopt water cooling to ensure superior working condition.



- Adopt the world famous brand ELME original imported spreader, stable performance, reliable quality.
- Imported kessler brand drive axle, wet brake, dustproof and waterproof, maintenance-free.
- Excellent braking performance to meet the requirements of long time and heavy working conditions.
- High axle housing strength, high transfer efficiency and accuracy, stability and reliability.



2

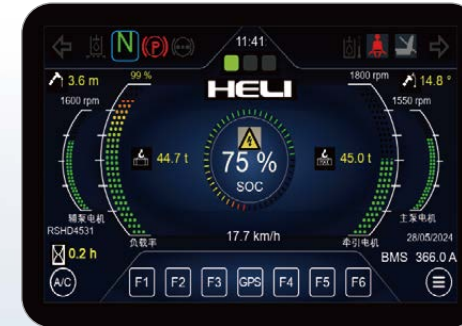
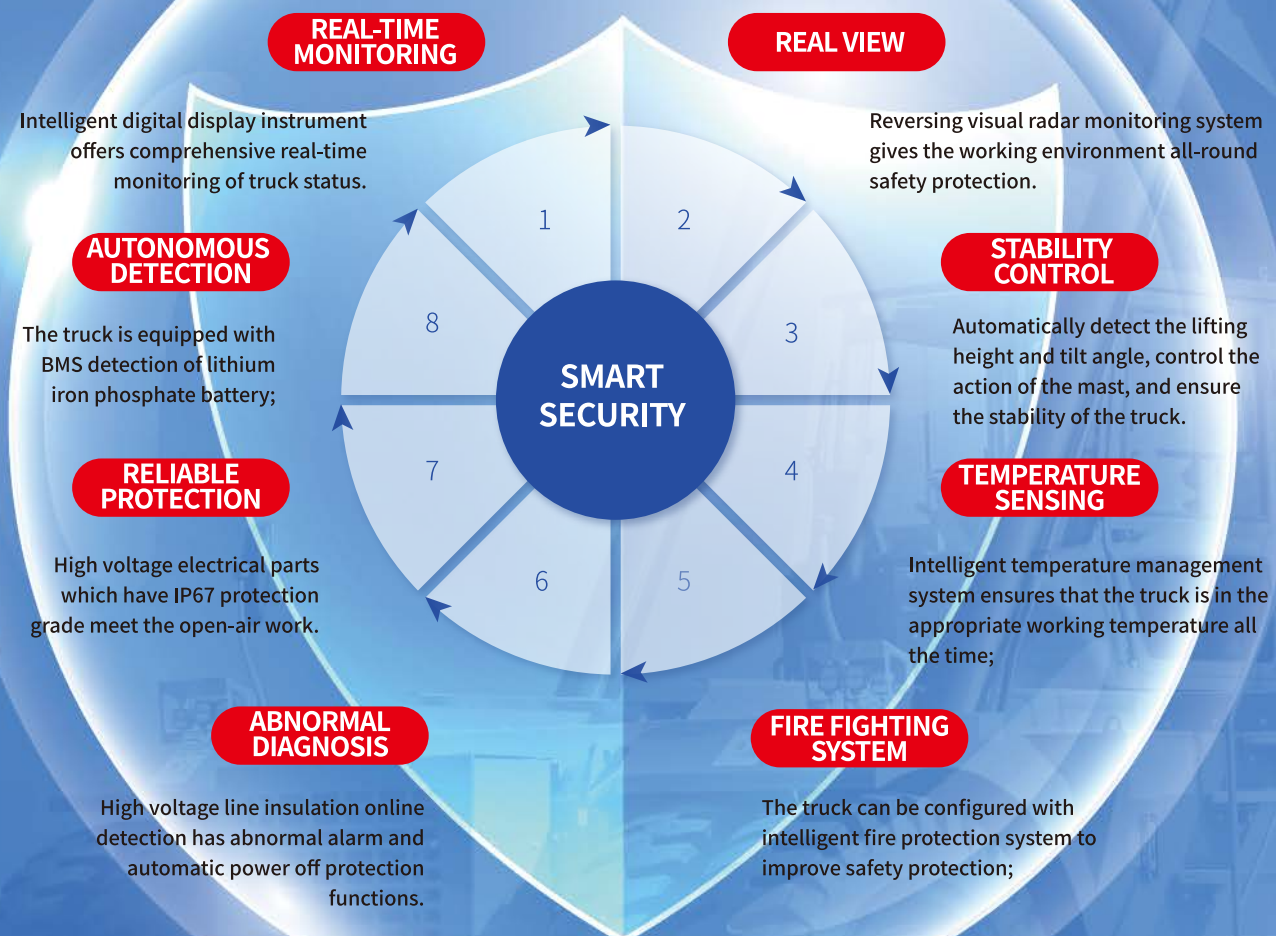
RELIABLE QUALITY

3

INTELLIGENT SAFETY

EIGHT ASPECTS OF SECURITY

- The truck high voltage line has insulation online monitoring function, combined with intelligent fire protection system, real-time monitoring of truck status can be achieved;
- High protection level (IP67) high voltage electrical components and intelligent temperature management system meet the outdoor all-weather work needs.



Rich instrument display content and human-computer interaction interface achieves timely acquisition of truck status, ensuring safe driving, stable operation.



The control panel is equipped with USB charging interface, radio with input port and support SD card, sunshade and bottle holder, etc., to provide drivers with a full range of "passenger vehicle" comfortable experience.

4

COMFORTABLE AND ECO-FRIENDLY

A RELAXED DRIVING EXPERIENCE FOR CUSTOMERS

- Fully closed sliding cab, reduce the noise transmission of the truck.
- Flow amplification technology, full hydraulic power steering, steering operation is light and flexible.
- Standard configuration of heating and cooling dual high-pressure electric split air conditioning offers high air conditioning energy utilization. The air duct is the front and the lower part, giving the driver a comfortable operating environment.



TECHNICAL PARAMETERS

5 ECONOMIC

According to the calculation of 8 hours a day, the annual comprehensive use cost of electric truck is 17.5% of the IC truck, and the cost can be saved by 2.23 million RMB in 5 years. It can reduce carbon emissions by 180 tons per year.

INTERNAL COMBUSTION TRUCK

ELECTRIC TRUCK

17.5%

COMPARISON OF USING COSTS (ANNUAL)

*Due to the differences in working conditions, the fluctuation of electricity price and oil price, the data will fluctuate also, so the above data is for reference only.

Savings of RMB 446,000 after one year

RMB 2,230,000 after five years

TECHNICAL PARAMETERS

parameter		Electric reach stacker	
1.1	model	RSHD4527-A19LLiG2	RSHD4531-A19LLiG2
1.2	capacity (first row/second row/third row)	吨 45000/27000/15000	45000/31000/15000
1.3	Lifting container specifications	ft	20/40/45
1.4	Maximum lifting speed (unload/load)	mm/s	420/280
1.5	Lowering speed (unload/load)	mm/s	360/360
1.6	Maximum travelling speed (unload/load)	Km/h	21/19
1.7	Maximum gradeability	%	15
1.8	overall length (including accessories)	mm	11300x4148x4754
1.9	wheelbas	mm	6000
1.10	Wheel distance (front/rear)	mm	3030/2838
1.11	spreader	model	EIME 817 INN
1.12		side shift	mm +800~-800
1.13		rotate	mm -105~+195
1.14	reach stacker weight	kg	72000 73000
1.15	battery type		LFP
1.16	battery capacity	kWh	422.9 as standard, 507 optional
1.17	Charging time (300KW charger)	min	90

FORMAL SIZE

